

February 9th, 2018

To Whom It May Concern,

It is my sincerest pleasure to inform you that the KDI School of Public Policy and Management is providing a Korean Government Scholarship Program (2018 NIIED GKS-KGSP), which is a 3-year program offered outstanding international candidates. With this scholarship opportunity, we are offering the following programs:

- Masters of Public Policy (MPP)
- Masters of Development Policy (MDP)
- Masters of Public Management (MPM)

The KDI School was founded as an affiliate educational institution of the Korea Development Institute (KDI), a premier government economic think tank positioned at the forefront of the field of social science research for the past 40 years. Drawing from the resources of the institute, the KDI School provides an exceptional educational experience that combines current academic theories with comprehensive and innovative practical research to support our national vision and key policy agendas.

The quality of our educational programs and our faculty rivals that of internationally renowned institutions, and we have received accreditation from the NASPAA—Network of Schools of Public Policy, Affairs and Administration for MPP programs in 2014 and MDP program in 2017. (This is the first NASPAA accreditation in Korea, and the second outside the U.S.A.)

All lectures are conducted in English by renowned our faculty who hold established credentials in the public and/or the private sector, thus attracting many international students around the globe. The KDI School admits outstanding international students from 70 different countries every year, and has graduated accomplished alumni in 119 countries since our establishment.

Scholars of the NIIED GKS-KGSP will receive round-trip airfare, full waiver of their tuition, and a monthly stipend. Applications with required documents are accepted up until March 16th. You will find more information about the scholarship in the enclosed leaflet. Please feel free to contact the admissions office of KDI School for more information.

I deeply appreciate your support and cooperation in advance and look forward to welcoming outstanding scholarship beneficiaries from your country.

Sincerely,

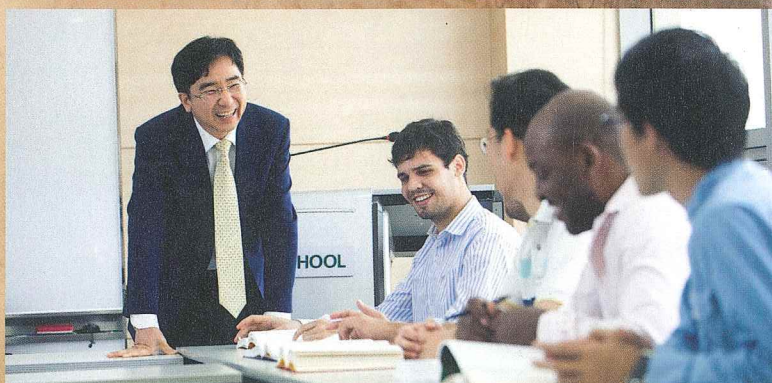
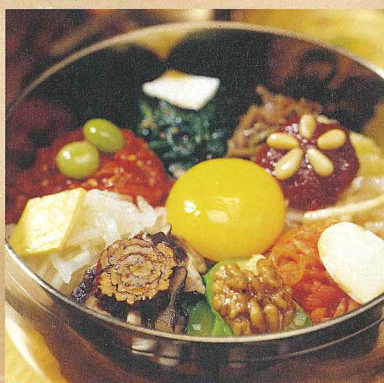
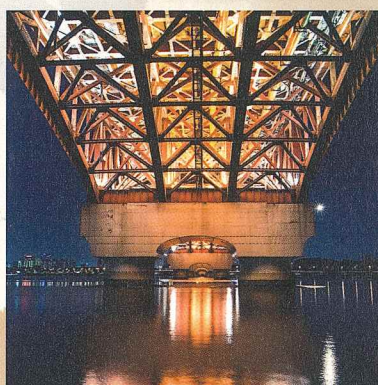


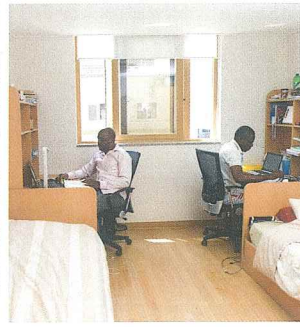
Hong Tack Chun,
Dean of KDI School of Public Policy and Management



KDI SCHOOL
KDI School of Public Policy and Management

2018 NIIED GKS-KGSP Korean Government Scholarship Program





Why KDI School?

1. World-Class International Graduate School

- Academic curriculum is drawn from assets of the Korea Development Institute (KDI), Asia's top think-tank and the world's best in International Development (*Global Go To Think Tank Index Report*)
- Received NASPAA* Accreditation (*Network of Schools of Public Policy, Affairs and Administration)
 - Master of Public Policy (MPP) program (2014)
 - Master of Development Policy (MDP) programs (2017)
 - ※ KDI School is the first and only NASPAA-accredited school in Korea
- Designated as the Korea Hub of the World Bank GDLN (2001) and appointed as GDLN Global Secretariat (2014)
- Teach all day-time classes in English



2. Top-notch Faculty

- Faculty consisting of Ph.D.'s from top-tier universities in the world such as Harvard, MIT and Cornell
- Faculty owns a wealth of experience in both the public and the private sectors including government, OECD, WBI, KDI, and Bank of Korea
- Multi-national diversity, including faculties from the U.S., U.K., Canada, Greece, and Uzbekistan

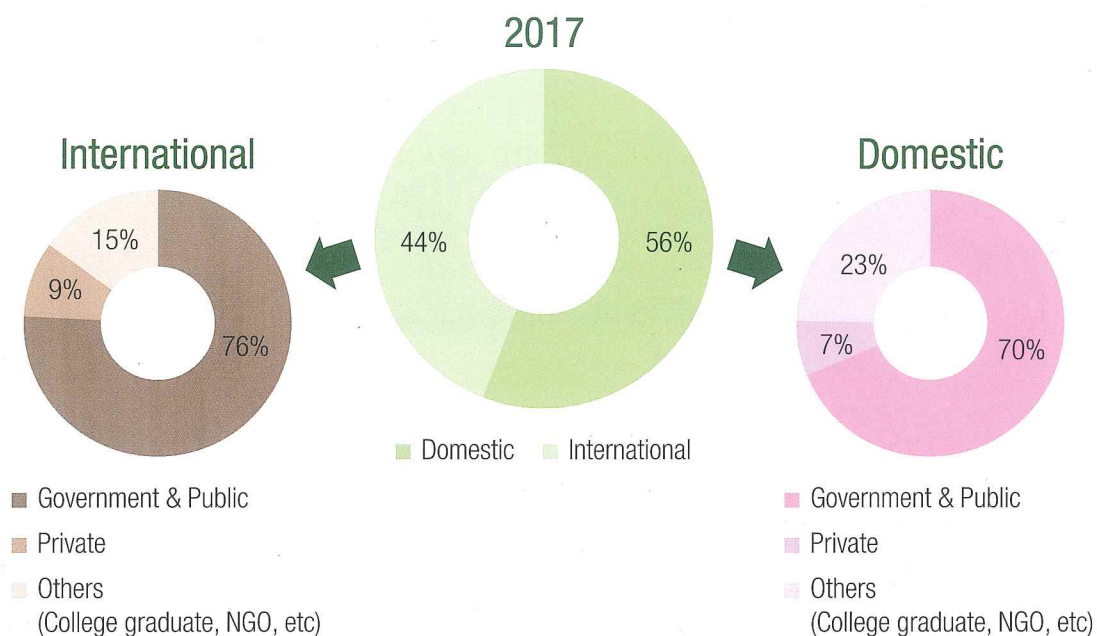


3. Superior Educational System

- Received IEQAS (International Education Quality Assurance System) accreditation from Ministry of Education for excellent international student management
- Offers a wide range of internship opportunities available at central government and government-funded research institutes nearby
- Extensive library collection including KDI resources and archives
 - ※ KDI Central Library received the 1st prize in 2017 National Library Evaluation

4. Diverse Student Body

- Truly international environment with international students representing almost 50% of the student body
- International students from more than 70 countries around the world, creating a unique multi-cultural environment every year

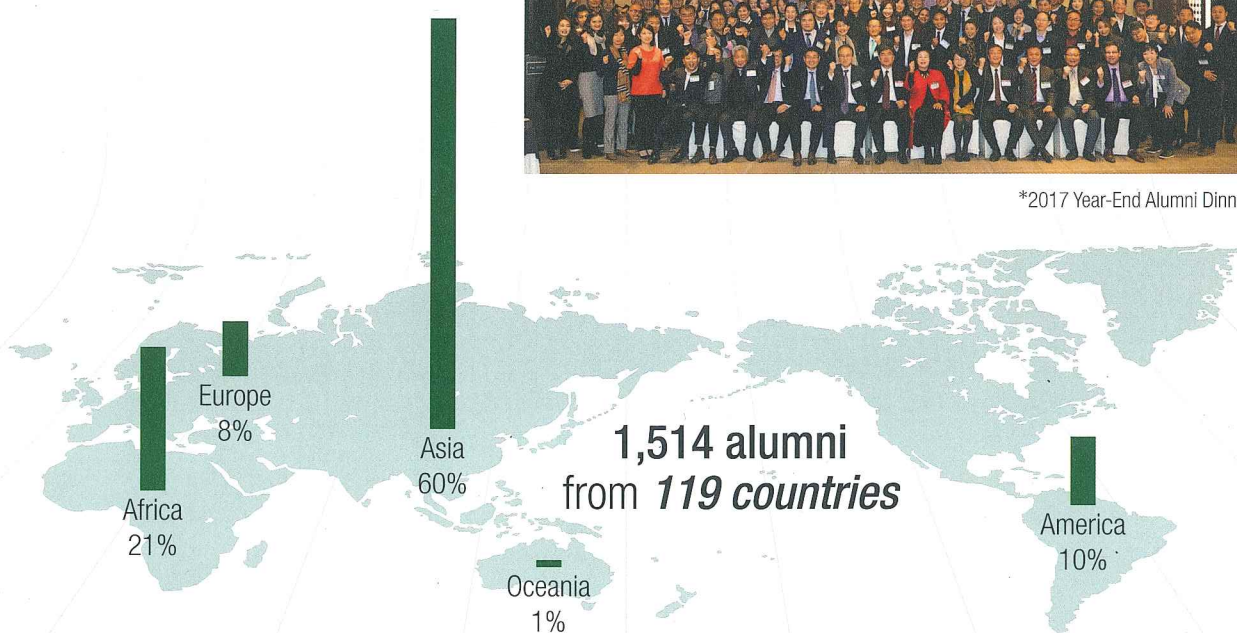


5. Globe-spanning Alumni Network (1998-2017)

- Over 1,500 international alumni from 119 countries serving as global leaders all over the world



*2017 Year-End Alumni Dinner



Academic Programs

| Degree Program | Introduction | Study Areas |
|--|---|--|
| MPP (Master of Public Policy) | Designed to provide a global perspective and professional expertise in public policy | <ul style="list-style-type: none"> - Finance and Macroeconomic Policy - Trade and Industry Policy - Public Finance and Social Policy - Regional Development and Environment Policy |
| MPM (Master of Public Management) | Designed to cover various facets of management and leadership in the public and private sectors | <ul style="list-style-type: none"> - Public Administration and Leadership - Strategic Management - Global Governance and Political Economy |
| MDP (Master of Development Policy) | Designed to examine various socio-economic issues in both the theoretical and the practical framework | <ul style="list-style-type: none"> - Sustainable Development - International Development |

My KDI School Experience



CHENG, Ranel Ram (2016 MPP, Philippines)

KDI School offers a variety of opportunities for students from all over the world to interact with one another and to learn from each other. Learning isn't confined to the rigorous coursework and training we receive in the classroom. We also have opportunities to attend special lectures, seminars, internship programs, and other activities within and outside the KDI School campus. I have had the privilege to be one of the first students to take part in the Government Reform Case Study Project, which allowed me to conduct field research in my home country, the Philippines, under the guidance of my KDIS professor. More than the academic experience, however, I will forever be grateful for all the wonderful friendships forged and the memories we shared as one KDI School community.



RODRIGUEZ RAMIREZ, Rony (2016 MDP, Nicaragua)

KDI School has played an essential role in my current academic life. Not only because I have gained knowledge from top-notch professors but also because the KDI School community is vastly diverse which gives you a better understanding of policy-making in every single country. Different workshops, capacity building, seminars, and conferences have enhanced my research experience at KDI School. From Labor Economics to Development Economics, the school offers a variety of topics that allow you to understand and critically think about current development issues. I have improved significantly my research skills thanks to the support of my supervisors and their valuable advice. These improvements have allowed me to participate in international events and submit my research to relevant conferences. My life at KDI School is a combination of cultural diversity, state-of-art development debate, capacity building and constant improvements in my daily life. Without a second thought, I'm proud to say that KDI School is the place where you can start changing the world.

What is NIIED GKS-KGSP?

The KGSP (Korean Government Scholarship Program) is a scholarship program sponsored by the NIIED (National Institute for International Education) and designed to provide higher education in Korea for international students with the aim of promoting international exchange in education and mutual friendship amongst the participating countries.

| | | |
|---------------------------|---|---|
| *Benefits | Airfare | Round-trip economy class ticket |
| | Monthly Allowance | 900,000 KRW per month |
| | Research Allowance | 210,000 KRW for scholars in the field of humanities and social sciences |
| | Settlement Allowance | 200,000 KRW upon arrival |
| | Tuition | All admission fees are waived by the host institution (university) The tuition is covered by NIIED and the university. |
| | Dissertation Printing Costs | Reimbursement of 500,000 ~ 800,000 KRW depending on actual cost |
| | Medical Insurance | 20,000 KRW per month (limited coverage) |
| | Korean Proficiency Grants | 100,000 KRW per month for scholars with TOPIK Level 5 or 6 |
| Scholarship Period | Total 3 years (1 year Korean Language Courses + 2 year Degree Courses) | |
| *Qualifications | ① The applicant and his/her parents must hold foreign citizenships. * Applicants with the Korean citizenship are not permitted to apply for this program. ② Applicants must be under 40 years of age of the selection year. ③ Applicants must hold a Bachelor's or Master's degree as of September 1st of the selection year. * Applicants who have completed an undergraduate program, a master's program, or a doctoral program in Korea are ineligible to apply for the program. ④ The academic achievement of the applicants must meet one of the followings: - The grade point average (GPA) must be no less than 2.64 on a 4.0 scale, 2.80 on a 4.3 scale, 2.91 on a 4.5 scale - The overall grades must be no less than 80% out of 100% | |

* Please check the application guideline for details.



How to apply?

Applicants should apply via either a designated university or a designated embassy as indicated in 2018 NIIED GKS-KGSP Application Guideline.

- ※ Please be sure which track is required for your country
- ※ The application guideline can be downloaded from KDI School's admissions website
<<http://admissions.kdischool.ac.kr>>

1. (University Track) Apply via KDI School

- Application Deadline: March 16th, 2018
- Application Submission
 - 1) Prepare application documents as instructed in the application guideline.
 - ※ *Incomplete applications will not be submitted for evaluation.*
 - 2) Submit an online application through the KDI School's admissions website.
 - ※ <https://apply.kdischool.ac.kr/>
 - 3) Submit required documents via postal mail to the admissions office by the deadline.
 - ※ *Address: 263 Namsejong-ro, Sejong-si, 30149, KDI School, Republic of Korea*
- Final Result: Late June, 2018

2. (Embassy Track) Apply via Korean Embassy

- Application Deadline: TBA by each embassy
 - Application Submission
 - 1) Prepare application documents as instructed in the application guideline.
 - 2) Submit required documents to designated Korean embassy.
 - Final Result: Late June, 2018
- ※ *Each designated embassy has a different application process and applicants applying via embassy must check with the embassy first*

Contact Information

- Address (Application Submission) :
The Office of Admissions KDI School of Public Policy and Management
263 Namsejong-ro, Sejong-si, 30149, Republic of Korea
- Phone : +82-44-550-1281(1220)
- E-mail : internationaladmissions@kdis.ac.kr
- Office Hour : 9:00~18:00, KST
- Website : <http://admissions.kdischool.ac.kr/>